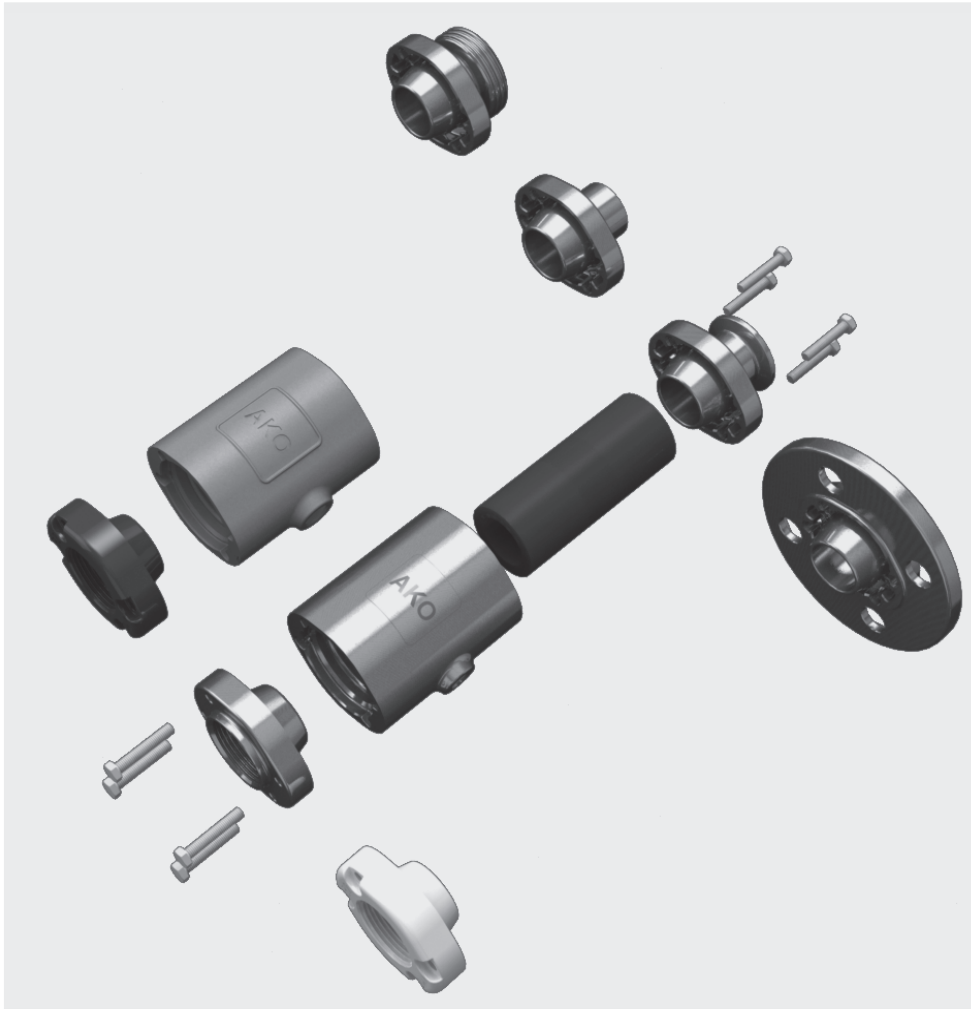


New!

Pneumatisk slangventil typ VMC Air operated Pinch Valve type VMC



fläns / Flange



invändig gänga / Internal Thread



klämmuff / Tri-Clamp



svetsändar / Weld-on ends




gängad kopplingsring / Threaded spigot

 **Det flexibla modulsystemet för löstagbara och aseptiska rörledningskopplingar!**

Den perfekta lösningen för att stänga av och reglera alla typer av fasta ämnen, suspensioner, pasta, fibriga och tröga material.

Fördelar:

- flexibelt modulsystem
- diverse anslutningsmöjligheter
- extremt kompakt
- låg vikt
- fritt genomflöde för material som transporteras
- utan vak
- enkelt att byta manschetter
- optimal tätning
- fördelaktigt pris

 **The flexible modular system for solvable and aseptic piping connections!**

The ideal solution for isolation and regulation of solids of all kinds, suspensions, pastes, gaseous, fibrous and viscous media.

Advantages:

- Flexible modular system
- Various connection options
- Extremely compact
- Light weight
- Complete free passage
- No dead spots
- Easy maintenance and re-sleeving
- 100% tight shut off
- Competitive

Pneumatisk slangventil typ VMC

Air operated Pinch Valve type VMC

Industriella områden:

- livsmedels-/ läkemedelsindustri
- kemisk industri
- pneumatiska transportsystem
- bearbetning av pigment/ granulation
- keramik-/ glas-/ plastindustri
- uppsugningsanläggningar
- doseringsanläggningar
- tappnings- och våganläggningar
- ventilationssystem

Anslutningar med alla typer av aseptiska kopplingar möjliga!

Anslutningsmöjligheter:

flänsanslutning
 invändig gänga anslutning G / NPT
 klämmuff
 svetsändar
 gängad kopplingsring (mjölkgänga)

Speciella konduktiva utförande med speciell jordning för användning inom Ex-områden enligt zon 1, 2, 21 och 22 finns också.

De pneumatiska slangventilerna i serie VMC uppfyller alla krav enligt EG-direktivet för tryckutrustning 97/23/EG.

Råvaror / material:

Kåpa: Rostfrittstål 1.4408
 Aluminium AlSi10Mg
 Plast POM

Anslutningslock: Rostfrittstål 1.4404
 Plast POM

Manschetter:

Naturgummi anti-abrasiv, naturgummi livsmedel, EPDM, EPDM livsmedel, nitril, nitril livsmedel, hypalon, butyl, neopren, silikon, fluoroelastomer (viton), andra efter förfrågan.

max. arbetstrycket: ~ 6 bar

max. styrtrycket: 8 bar

Differenstryck: 2-3,5 bar
 varierande utifrån nominellt mått/gummi

Industrial areas:

- Food/ pharmaceutical/ beverage industry
- Chemical industry
- Pneumatic conveying systems
- Pigments and granules
- Ceramics/ glass/ plastic industry
- Extraction systems
- Dosing systems
- Filling and weighing systems
- Air venting systems

Connections with various aseptic connections available!

Connection options:

Flange Connection
 Internal Thread Connection G / NPT
 Tri-Clamp
 Weld-on ends
 Threaded spigot (RJT Connection)

Special, conductive models with a separate earthing system, which are suitable for use in areas at risk of explosions (EX) in zones 1, 2, 21 and 22 are also available.

The air operated Pinch Valves of VMC series fulfill all requirements of the Pressure Equipment Directive 97/23/EC.

Materials:

Body: Stainless steel 1.4408
 Aluminium AlSi10Mg
 Plastic POM

Socket Connection: Stainless steel 1.4404
 Plastic POM

Sleeves:

Natural rubber antiabrasive, Natural rubber food quality, EPDM, EPDM food quality, Nitrile, Nitrile food quality, Hypalon, Neoprene, Silicone, Viton, other materials on request.

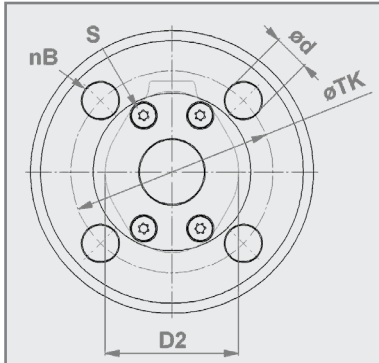
Operating / medium pressure max.: ~ 6 bar

Control / closing pressure max.: 8 bar

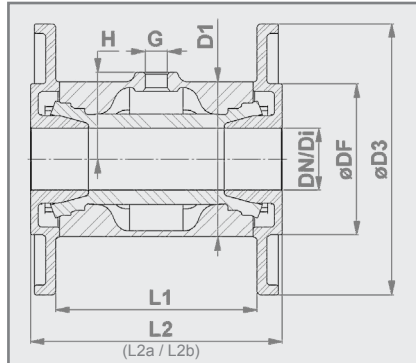
Differential pressure: 2-3.5 bar
 varies depending on diameter / sleeve

Pneumatisk slangventil - Flänsanslutning

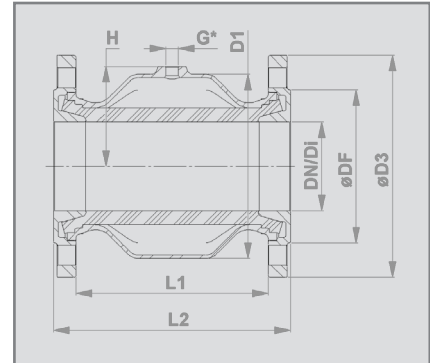
Air operated Pinch Valve - Flange connection



DN25 - DN80



DN25 - DN50 * DIN EN ISO 228 "G"



DN65 - DN80 * DIN EN ISO 228 "G"

Anslutningsutförande:

Flänsanslutning enligt
DIN EN 1092-1 PN 10/16

DIN 11853-2 (L2a) / 11864-2 form A (L2b) på begäran

Connection type:

Flange connection according to
DIN EN 1092-1 PN 10/16

DIN 11853-2 (L2a) / 11864-2 form A (L2b) on request

Kåpa:

- Rostfrittstål 1.4408 (E)
- Aluminium AlSi10Mg (A)

Body:

- Stainless steel 1.4408 (E)
- Aluminium AlSi10Mg (A)

Flänsar:

- Rostfrittstål 1.4404 (E)

Flange:

- Stainless steel 1.4404 (E)

Ventilyta:

Rostfrittstål: Elektropolerad matt

Produktberörda delar = Ra 0,5

På begäran mekaniskt polerad Ra 0,3.

Aluminium: Pulverlackerad 60-80µm RAL 9006

Valve finish:

Stainless steel: Electropolished matt

Wetted parts = Ra 0.5

Satin polished (brushed) Ra 0.3 on request.

Aluminium: Powder coated 60-80µm RAL 9006

DN / Di (mm)	D1 (mm)	D2 (mm)	ø D3 (mm)	ø DF (mm)	nB	ø d (mm)	ø TK (mm)	L1 (mm)	L2 (mm)	L2a (mm)	L2b (mm)	G (inch)	H (mm)	S	² vol. (l) (ca./approx.)	Vikt weight (kg) (EE)	Vikt weight (kg) (AE)
25	72	57	115	68	4	14	85	96	125	213	218	1/8"	36,5	4x(M6x35)	0,09	2,4	1,9
32	80	66	140	78	4	18	100	104	130	226	241	1/4"	45	8x(M6x35)	0,13	2,9	2,3
40	90	77	150	88	4	18	110	119	155	238	253	1/4"	50	8x(M6x35)	0,22	4,0	3,1
50	110	88	165	106	4	18	125	149	185	264	279	1/4"	60	8x(M6x35)	0,36	5,8	4,4
65	139	102	185	122	4	18	145	133	170	267	327	1/4"	73,5	8x(M10x20)	0,44	5,5	4,5
80	172	126	200	138	4	18	160	173	213	309	373	1/4"	90	8x(M10x20)	0,88	7,5	5,3

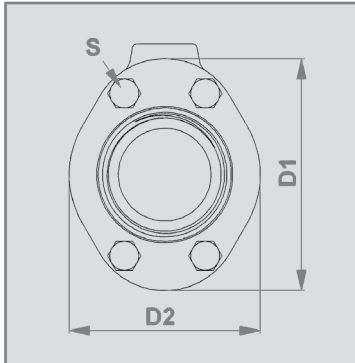
¹ Ant. borrhågar / Number of holes

¹ Monteringskruvar (rostfrittstål 1.4401 / AISI 316) enligt DIN 7985 / mounting screws (stainless steel 1.4401 / AISI 316) according to DIN 7985

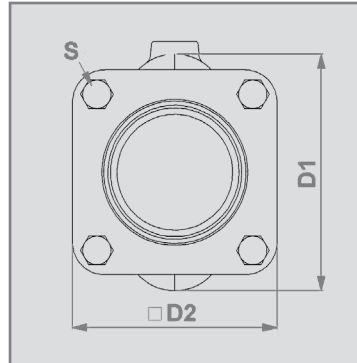
² Volym = innehåll av kontrollmedel vid stängd manschett / Volume = Control volume with closed sleeve

Pneumatisk slangventil - Invändig gänga anslutning

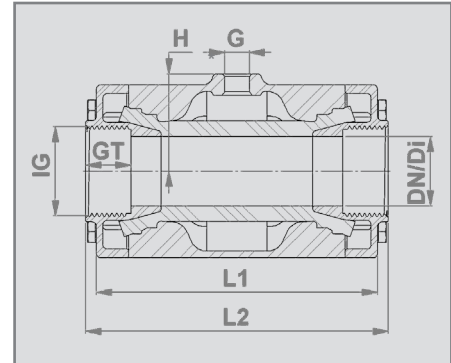
Air operated Pinch Valve - Internal Thread connection



DN10 - DN50



DN65 - DN80



* DIN EN ISO 228 "G"


Anslutningsutförande:

Invändig gänga anslutning enligt
DIN EN ISO 228 "G" eller
ANSI/ASME B1.20.1 "NPT"


Connection type:

Internal Thread Connection according to
DIN EN ISO 228 "G" or
ANSI/ASME B1.20.1 "NPT"


Kåpa:

- DN10-80: Rostfrittstål 1.4408 (E)
- DN20-80: Aluminium AlSi10Mg (A)
- DN10-15: Plast POM natur (P)
- DN10-15: Plast POM ledningsförmåga (P) 


Body:

- DN 10-80: Stainless steel 1.4408 (E)
- DN 20-80: Aluminium AlSi10Mg (A)
- DN 10-15: Plastic POM (P) natural white
- DN 10-15: Plastic POM (P) conductive 

Gängat lock:

- DN10-80: Rostfrittstål 1.4404 (E)
- DN20-50: Plast POM (P) natur, livsmedelsäkt
- DN20-50: Plast POM (P) ledningsförmåga, för områden med explosionsrisk 

(Internal Thread) Socket ends:

- DN 10-80: Stainless steel 1.4404 (E)
- DN 20-50: Plastic POM (P) natural white
- DN 20-50: Plastic POM (P) conductive for hazardous areas 

Ventilyta:

Rostfrittstål: Elektropolerad matt

Valve finish:

Stainless steel: Electropolished matt

Aluminium: Pulverlackerad 60-80µm RAL 9006

Aluminium: Powder coated 60-80µm RAL 9006

DN / Di (mm)	D1 (mm)	D2 (mm)	IG (inch)	GT (mm)	L1 (mm)	L2 (mm)	G (inch)	H (mm)	¹ S	² vol. (l) (ca./approx)	Vikt weight (kg) (EE)	Vikt weight (kg) (AE)	Vikt weight (kg) (AP)	Vikt weight (kg) (PE)
10	46	35	G ³ / ₈ "	12	68	80	1/8"	23	4x(M6x16)	0,03	0,5	-	-	0,3
15	56	47	G ¹ / ₂ "	15	85	95	1/8"	28	4x(M6x20)	0,05	0,8	-	-	0,4
20	62	49	G ³ / ₄ "	17	93	103	1/8"	31,5	4x(M6x25)	0,07	0,9	0,6	0,4	-
25	72	57	G1"	20	110	120	1/8"	36,5	4x(M6x30)	0,09	1,4	0,8	0,5	-
32	80	66	G1 ¹ / ₄ "	21	130	140	1/4"	45	8x(M6x35)	0,13	1,8	1,2	0,9	-
40	90	77	G1 ¹ / ₂ "	21	150	160	1/4"	50	8x(M6x35)	0,22	2,4	1,5	1,1	-
50	110	88	G2"	25	175	185	1/4"	60	8x(M6x35)	0,36	3,6	2,2	1,6	-
65	139	115	G2 ¹ / ₂ "	30	173	200	1/4"	73,5	8x(M10x35)	0,44	3,7	3,0	-	-
80	172	133	G3"	33	213	230	1/4"	90	8x(M10x35)	0,88	5,5	4,4	-	-

¹ Montageschrauben (Edelstahl 1.4401 / AISI 316) nach DIN 933 (EN24107) / mounting screws (stainless steel 1.4401 / AISI 316) according to DIN 933 (EN24107)

² Volumen = Steuermediumsvolumen bei geschlossener Manschette / Volume = Control volume with closed sleeve

* Alternativ steht Ihnen unsere K-Variante zur Verfügung → Einbaulänge = 150mm / Alternatively available is our K-variant → length = 150mm

Tekniska ändringar förbehålls

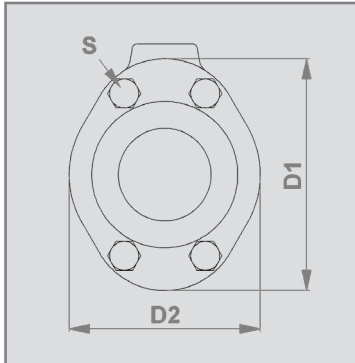
Technical details subject to change without notice.

AKO Armaturen & Separations GmbH

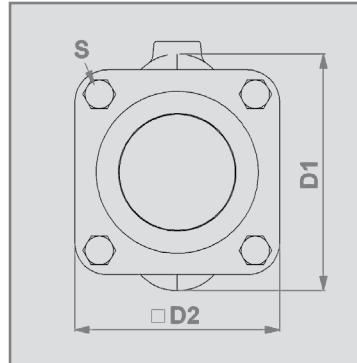
D-65468 Trebur-Astheim • Adam-Opel-Str. 5 • Telefon: +49 (0) 61 47-9159-0 • Fax: +49 (0) 61 47-9159-59
E-post: ako@ako-armaturen.de • Internet: www.slangventiler.se

Pneumatisk slangventil - Klämringanslutning

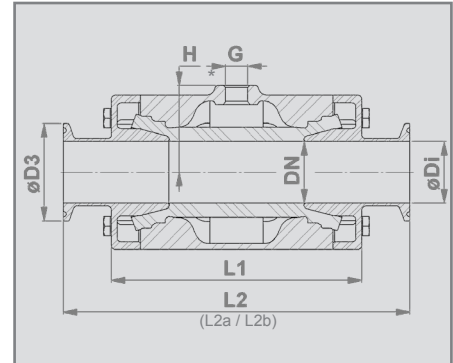
Air operated Pinch Valve - Tri-Clamp connection



DN10 - DN50



DN65 - DN80



* DIN EN ISO 228 "G"

Anslutningsutförande:

Klämmuff enligt DIN 32676


DIN 11853-3 (L2a) / 11864-3 form A (L2b) på begäran

Connection type:


Tri-Clamp according to DIN 32676

DIN 11853-3 (L2a) / 11864-3 form A (L2b) on request

Kåpa:

- DN10-80: Rostfrittstål 1.4408 (E)
- DN20-80: Aluminium AlSi10Mg (A)
- DN10-15: Plast POM natur (P)
- DN10-15: Plast POM ledningsförmåga (P) 

Body:

- DN 10-80: Stainless steel 1.4408 (E)
- DN 20-80: Aluminium AlSi10Mg (A)
- DN 10-15: Plastic POM (P) natural white
- DN 10-15: Plastic POM (P) conductive 

Klämmuff:

- DN10-80: Rostfrittstål 1.4404 (E)

Tri-Clamp Connection:

- DN 10-80: Stainless steel 1.4404 (E)

Ventillängd:

DN10: Enligt DIN EN 558 serie 27

DN15-50: Enligt DIN EN 558 serie 1

DN65-80: Enligt DIN EN 558 serie 7

Valve face to face length:

DN 10: Acc. to DIN EN 558 row 27

DN 15-50: Acc. to DIN EN 558 row 1

DN 65-80: Acc. to DIN EN 558 row 7

Ventilyta:

Rostfrittstål: Elektropolerad matt

Produktberörda delar = Ra 0,5

På begäran mekaniskt polerad Ra 0,3.

Valve finish:

Stainless steel: Electropolished matt

Wetted parts = Ra 0.5

Satin polished (brushed) Ra 0.3 on request.

Aluminium: Pulverlackerad 60-80µm RAL 9006

Aluminium: Powder coated 60-80µm RAL 9006

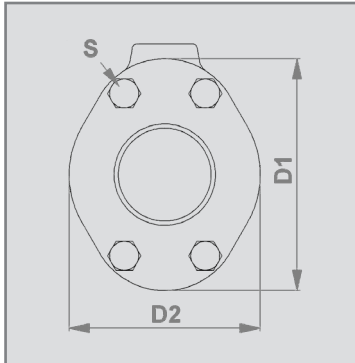
DN (mm)	ø Di (mm)	D1 (mm)	D2 (mm)	ø D3 (mm)	L1 (mm)	L2 (mm)	L2a (mm)	L2b (mm)	G (inch)	H (mm)	¹ S	² vol. (l) (ca./approx.)	Vikt weight (kg) (EE)	Vikt weight (kg) (AE)	Vikt weight (kg) (PE)
10	10	46	35	34	80	115	162	190	1/8"	23	4x(M6x16)	0,03	0,5	-	0,3
15	16	56	47	34	95	130	187	215	1/8"	28	4x(M6x20)	0,05	0,9	-	0,5
20	20	62	49	34	103	150	199	227	1/8"	31	4x(M6x25)	0,07	1,0	0,6	-
25	26	72	57	50,50	120	160	212	241	1/8"	36	4x(M6x30)	0,09	1,5	1,0	-
32	32	80	66	50,50	140	180	229	267	1/4"	45	8x(M6x35)	0,13	1,9	1,3	-
40	38	90	77	50,50	160	200	241	279	1/4"	50	8x(M6x35)	0,22	2,6	1,7	-
50	50	110	88	64	185	230	268	304	1/4"	60	8x(M6x35)	0,36	3,9	2,5	-
65	65	139	115	91	173	216	272	332	1/4"	73,5	8x(M10x35)	0,44	4,0	3,3	-
80	80	172	133	106	213	254	314	374	1/4"	90	8x(M10x35)	0,88	5,8	4,7	-

¹ Monteringskruvar (rostfrittstål 1.4401 / AISI 316) enligt DIN 933 (EN24107) / mounting screws (stainless steel 1.4401 / AISI 316) according to DIN 933 (EN24107)

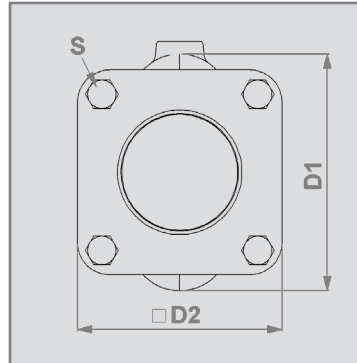
² Volym = innehåll av kontrollmedel vid stängd manschett / Volume = Control volume with closed sleeve

Pneumatisk slangventil - Svetsändar

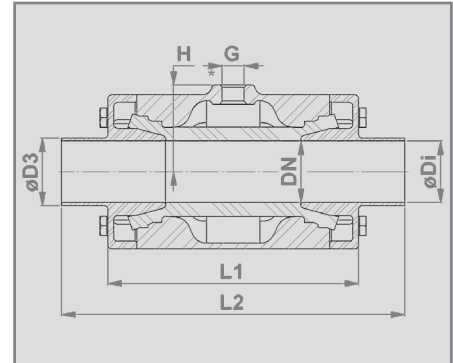
Air operated Pinch Valve - Weld-on ends



DN10 - DN50



DN65 - DN80



* DIN EN ISO 228 "G"


Anslutningsutförande:

Svetsändar enligt DIN 11850 serie 2


Connection type:

Weld-on ends according to DIN 11850 row 2

Kåpa:

- DN10-80: Rostfrittstål 1.4408 (E)
- DN20-80: Aluminium AlSi10Mg (A)
- DN10-15: Plast POM natur (P)
- DN10-15: Plast POM ledningsförmåga (P) 

Body:

- DN 10-80: Stainless steel 1.4408 (E)
- DN 20-80: Aluminium AlSi10Mg (A)
- DN 10-15: Plastic POM (P) natural white
- DN 10-15: Plastic POM (P) conductive 

Svetsändar:

- DN10-80: Rostfrittstål 1.4404 (E)

Weld-on ends:

- DN 10-80: Stainless steel 1.4404 (E)

Ventillängd:

DN10: Enligt DIN EN 558 serie 27
 DN15-50: Enligt DIN EN 12982 serie 61
 DN65-80: Enligt DIN EN 558 serie 7

Valve face to face length:

DN 10: Acc. to DIN EN 558 row 27
 DN 15-50: Acc. to DIN EN 12982 row 61
 DN 65-80: Acc. to DIN EN 558 row 7

Ventilyta:

Rostfrittstål: Elektropolerad matt

Produktberörda delar = Ra 0,5
 På begäran mekaniskt polerad Ra 0,3.

Valve finish:

Stainless steel: Elektropolerad matt

Wetted parts = Ra 0.5
 Satin polished (brushed) Ra 0.3 on request.

Aluminium: Pulverlackerad 60-80µm RAL 9006

Aluminium: Powder coated 60-80µm RAL 9006

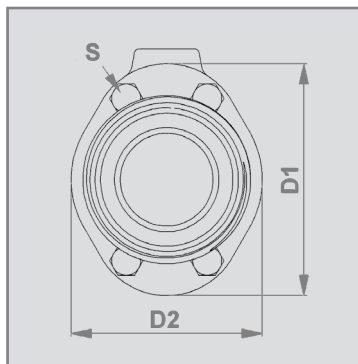
DN (mm)	ø Di (mm)	D1 (mm)	D2 (mm)	ø D3 (mm)	L1 (mm)	L2 (mm)	G (inch)	H (mm)	'S	² vol. (l) (ca./approx.)	Vikt weight (kg) (EE)	Vikt weight (kg) (AE)	Vikt weight (kg) (PE)
10	10	46	35	13x1,5	68	115	1/8"	23	4x(M6x16)	0,03	0,5	-	0,3
15	16	56	47	19x1,5	85	140	1/8"	28	4x(M6x20)	0,05	0,8	-	0,5
20	20	62	49	23x1,5	93	152	1/8"	31	4x(M6x25)	0,07	1,0	0,6	-
25	26	72	57	29x1,5	110	165	1/8"	36	4x(M6x30)	0,09	1,4	0,9	-
32	32	80	66	35x1,5	130	178	1/4"	45	8x(M6x35)	0,13	1,9	1,3	-
40	38	90	77	41x1,5	150	190	1/4"	50	8x(M6x35)	0,22	2,5	1,6	-
50	50	110	88	53x1,5	175	216	1/4"	60	8x(M6x35)	0,36	3,8	2,5	-
65	65	139	115	70x2	173	216	1/4"	73,5	8x(M10x35)	0,44	3,8	3,1	-
80	80	172	133	85x2	213	256	1/4"	90	8x(M10x35)	0,88	5,6	4,5	-

¹ Monteringskruvar (rostfrittstål 1.4401 / AISI 316) enligt DIN 933 (EN24107) / mounting screws (stainless steel 1.4401 / AISI 316) according to DIN 933 (EN24107)

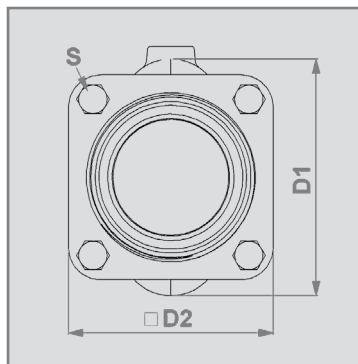
² Volym = innehåll av kontrollmedel vid stängd manschett / Volume = Control volume with closed sleeve

Pneumatisk slangventil - Gängad kopplingsring

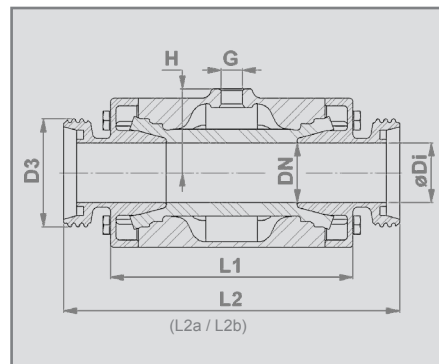
Air operated Pinch Valve - Threaded spigot



DN10 - DN50



DN65 - DN80



* DIN EN ISO 228 "G"

Anslutningsutförande:

Gängad kopplingsring enligt DIN 11851


DIN 11853-1 (L2a) / 11864-1 form A (L2b) på begäran

Connection type:


Threaded spigot according to DIN 11851

DIN 11853-1 (L2a) / 11864-1 form A (L2b) on request

Kåpa:

- DN10-80: Rostfrittstål 1.4408 (E)
- DN20-80: Aluminium AlSi10Mg (A)
- DN10-15: Plast POM natur (P)
- DN10-15: Plast POM ledningsförmåga (P) 

Body:

- DN 10-80: Stainless steel 1.4408 (E)
- DN 20-80: Aluminium AlSi10Mg (A)
- DN 10-15: Plastic POM (P) natural white
- DN 10-15: Plastic POM (P) conductive 

Gängad kopplingsring:

- DN10-80: Rostfrittstål 1.4404 (E)

Threaded spigot:

- DN 10-80: Stainless steel 1.4404 (E)

Ventillängd:

DN10: Enligt DIN EN 558 serie 27

DN15-50: Enligt DIN EN 558 serie 1

Valve face to face length:

DN 10: Acc. to DIN EN 558 row 27

DN 15-50: Acc. to DIN EN 558 row 1

Ventilyta:

Rostfrittstål: Elektropolerad matt

Produktberörda delar = Ra 0,5

På begäran mekaniskt polerad Ra 0,3.

Valve finish:

Stainless steel: Electropolished matt

Wetted parts = Ra 0.5

Satin polished (brushed) Ra 0.3 on request.

Aluminium: Pulverlackerad 60-80µmRAL 9006

Aluminium: Powder coated 60-80µm RAL 9006

DN (mm)	ø Di (mm)	D1 (mm)	D2 (mm)	D3	G (inch)	H (mm)	L1 (mm)	L2 (mm)	L2a (mm)	L2b (mm)	S	² Vol. (l) ² vol. (l) (ca./approx.)	Vikt weight (kg) (EE)	Vikt weight (kg) (AE)	Vikt weight (kg) (PE)
10	10	46	35	Rd28x1/8"	1/8"	23	68	115	153	197	4x(M6x16)	0,03	0,5	-	0,3
15	16	56	47	Rd34x1/8"	1/8"	28	85	130	178	222	4x(M6x20)	0,05	0,9	-	0,5
20	20	62	49	Rd44x1/6"	1/8"	31	93	150	194	238	4x(M6x25)	0,07	1,1	0,8	-
25	26	72	57	Rd52x1/6"	1/8"	36	110	160	217	251	4x(M6x30)	0,09	1,6	1,1	-
32	32	80	66	Rd58x1/6"	1/4"	45	130	180	238	274	8x(M6x35)	0,13	2,1	1,5	-
40	38	90	77	Rd65x1/6"	1/4"	50	150	200	252	286	8x(M6x35)	0,22	2,8	1,9	-
50	50	110	88	Rd78x1/6"	1/4"	60	175	230	278	312	8x(M6x35)	0,36	4,2	2,9	-
65	65	139	115	Rd95x1/6"	1/4"	73,5	173	266	336	336	8x(M10x35)	0,44	4,5	3,8	-
80	80	172	133	Rd110x1/6"	1/4"	90	213	304	382	382	8x(M10x35)	0,88	6,7	5,6	-

¹ Monteringskruvar (rostfrittstål 1.4401 / AISI 316) enligt DIN 933 (EN24107) / mounting screws (stainless steel 1.4401 / AISI 316) according to DIN 933 (EN24107)

² Volym = innehåll av kontrollmedel vid stängd manschett / Volume = Control volume with closed sleeve